



Formula 3E Water Measuring Tube

Technical Bulletin

Phoscrete Formula 3E is our first water-activated concrete product. An advantage of our older Phoscrete (Formula 2) MALP product was pre-measured Liquid Activator, assuring an accurate Wet to Dry mix ratio.

To keep the mix ratio of Phoscrete Formula 3E products as accurate, we designed this water measuring tube to make it fast and easy for you to measure and mix individual bags of Phoscrete in a bucket or measure and mix multiple bags in a paddle-style mortar mixer.

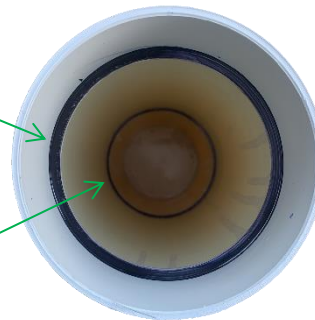


Phoscrete's Water Measuring Tube measures both:

- 114 ounces (7.15 lbs) for Phoscrete Formula 3E-HC (55 lb. bags)
- 58 ounces (3.64 lbs) for Phoscrete Formula 3E-VO (27 lb. bags)

F3E-HC - Fill Line

F3E-VO - Fill Line



Top View

Fill to the upper inside line for HC and to the lower line for VO

The 'lip' above the upper line prevents water spillage during transport. Using this tube is faster and easier than measuring using a graduated beaker where you must align the water to a mark on the outside of the container.

Always add water first into the bucket or mixer, next add Endure Admix, and then add Phoscrete Dry Mix. Use a Phoscrete urethane mixing auger and a drill mixer for best and fastest mix.

Visit our website for the latest installation guides and technical data. Contact Phoscrete installation support anytime for guidance on your concrete repair projects:

Call Us or Email: install@phoscrete.com